

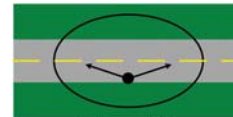
# Post Top Street Light LED Retrofit Kit



This SYLVANIA LED Retrofit Kit replaces up to 250-watt high-intensity discharge (HID) lamps in street light fixtures. By taking advantage of the directional light distribution of high power white LEDs, this revolutionary system delivers light only where needed, minimizing light trespass in applications. It is an ideal solution for communities that wish to convert their existing street lights to an environmentally preferable technology that offers substantial energy and maintenance cost savings as well as dramatic improvements in light quality. It is mercury-free, lead-free, and eliminates service calls for cycling the HID lamps.

## Key Features & Benefits

- Reduces street light energy consumption up to 85%
- Provides significant maintenance cost savings by lasting 2-6 times longer than HID lamps
- Reduces light pollution by eliminating upward light emission
- Enhances light quality with better uniformity and color performance
- 120 – 277V AC input voltage at 60Hz with surge protection
- Type-III Medium light distribution
- 5700K CCT, CRI 70
- Average rated life of 50,000 hours with 70% lumen maintenance
- Incorporates 60 Golden Dragon® Plus LEDs from OSRAM Opto Semiconductors
- UL1310 recognized Class 2 OPTOTRONIC® power supply
- UL pending for LED Retrofit Kit



Type-III

## Product Offering

Item Number	Description	Nominal Wattage	Voltage	CRI
78532	LED35POST/757/T3M/D11/1G	35	120-277	70

## Application Information

### Applications

Residential roadways, walkways and bikeways  
 Historic restorations and downtown business districts  
 Shopping centers, malls and plazas  
 College and business park campuses  
 Public parks  
 Parking lots and garages

### Application Notes

1. To prevent personal injury or product damage only licensed electricians should provide all installation services.
2. Please read installation manual before attempting installation.
3. To avoid electric shock or component damage disconnect power before attempting installation or servicing.
4. Installation must be structurally sound as to prevent damage or personal injury due to fixture collapse.
5. Any alteration or modification of this product is expressly forbidden as it may cause serious personal injury, death, property damage and/or product malfunction.



## Specification Data

Catalog #	Type
Project	
Comments	
Prepared by	Date

## Ordering Information

Item Number	Ordering Abbreviation	Input Voltage (VAC)	Nominal Wattage (W)	Power Factor <sup>1</sup>	Efficacy (lm/W)	Average Rated Life (hrs) <sup>2</sup>	CCT	CRI	Operation Temp.
78532	LED35POST/757/T3M/D11/1G	120-277	35	0.9	61	50,000	5700K	70	-30°C to 40°C

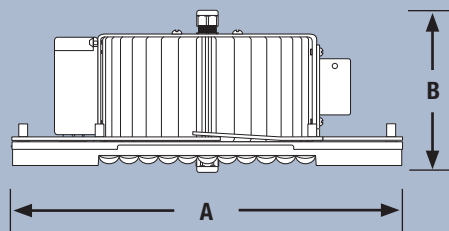
1. Power factor at nominal AC supply voltage

2. Hours lifetime with 70% lumen maintenance

## Ordering Guide

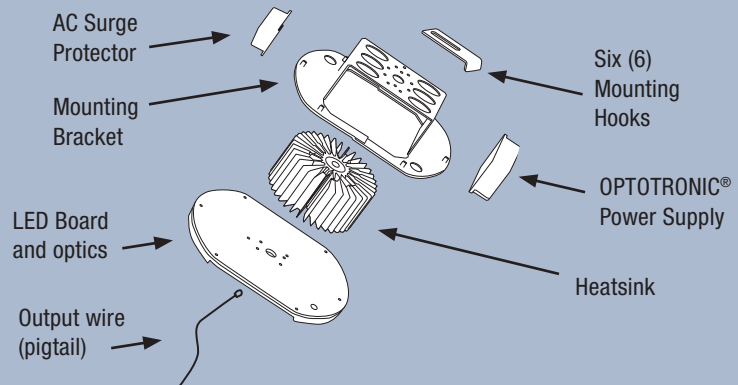
LED	35	POST	/	757	/	T3M	/	D11	/	1G
LED Lamps and Retrofits	Wattage: 35W	Fixture Type: Post Top		CRI, CCT 757: 70 CRI, 5700 CCT		Light Distribution T3M: Type-III medium		Diameter 11"		Generation 1G = First

## Technical Information



(A) Diameter	(B) MOL	Weight
11"	4.4"	6 lb

Post Top Street Light LED is pre-assembled



## Power Supply

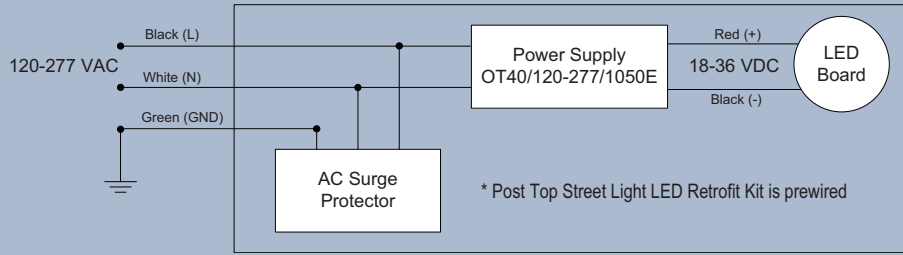
Item Number	Ordering Description	IP Rating
51530	OT40/120-277/1050E*	IP66

\* Constant current power supply (1.05A). UL1310 and UL48 recognized for US & Canada. Class 2 unit

## Wiring Diagram

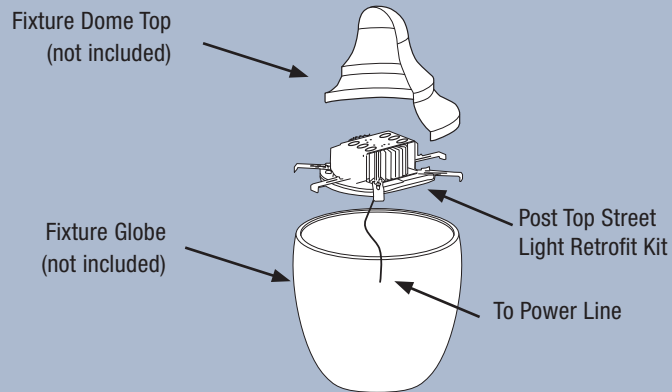
### Notes:

1. AC surge protector, OPTOTRONIC power supply and LED Module are prewired in Post Top Street Light LED Retrofit Kit
2. Post Top Street Light LED Retrofit Kit output wire: 18 AWG in pigtail (4 feet)



## Assembly Information

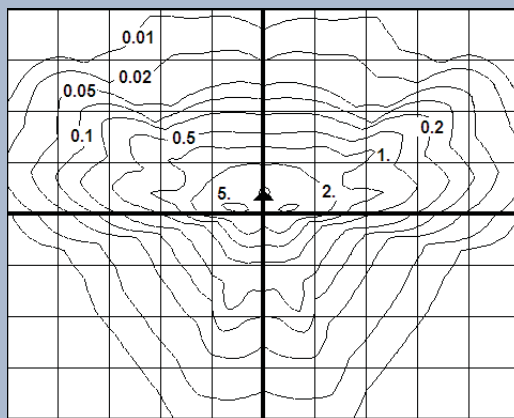
Refer to Installation Manual  
for mounting instructions



## Photometric Distribution

### Illuminance Diagram

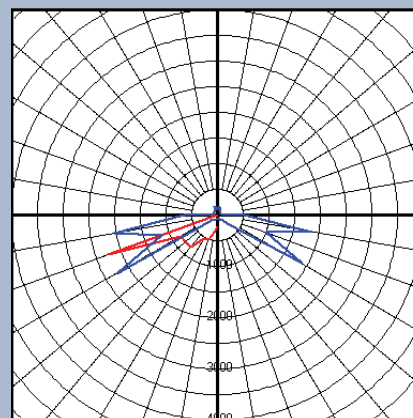
(Without fixture globe)



Mounting Height = 10'. Each box is one mounting height.  
Type III, Medium, Full-cutoff  
(Distribution might change when fixture globe is present)

### Luminous Intensity Distribution

(Without fixture globe)



Max plane at H = 300    Max cone at V = 70  
Max Candlepower = 2272  
(Distribution might change when fixture globe is present)

## Warranty

Refer to OSI Post Top Street Light LED Retrofit  
Kit Statement of Limited Warranty

**United States**  
**OSRAM SYLVANIA**  
100 Endicott Street  
Danvers, MA 01923

**Trade**  
Phone: 1-800-255-5042  
Fax: 1-800-255-5043

**National Accounts**  
Phone: 1-800-562-4671  
Fax: 1-800-562-4674

**OEM/Special Markets**  
Phone: 1-800-762-7191  
Fax: 1-800-762-7192

**Display/Optic**  
Phone: 1-888-677-2627  
Fax: 1-800-762-7192

**Canada**  
**OSRAM SYLVANIA LTD.**  
2001 Drew Road  
Mississauga, ON L5S 1S4

**Trade**  
Phone: 1-800-263-2852  
Fax: 1-800-667-6772

**OEM/Special Markets/Display/Optic**  
Phone: 1-800-265-2852  
Fax: 1-800-667-6772

[www.sylvania.com](http://www.sylvania.com)



Global Care represents  
OSRAM SYLVANIA's commitment to  
environmental and social responsibility.

SYLVANIA is a registered trademark of OSRAM SYLVANIA INC.  
OPTOTRONIC is a registered trademark of OSRAM GmbH.  
Specifications subject to change without notice.