

## Power Distribution & Commercial Lighting Division

### Benefit from our experience

For clients who demand the best, we have assembled one of the most experienced commercial lighting and electrical distribution design and engineer teams in the industry. They have a combined experience of over 100 years and will streamline your project to assure everything is on-time and under budget.

### Design & Supply

Our designers will recommend the latest labor saving devices and energy efficient products or systems where they might have been otherwise overlooked. We can also help you gain points towards LEED certification. Our team will handle your project from quote to punch list and will proactively identify potential issues and value engineer alternatives.

### Commercial Lighting Solutions

With the help of our consultant team, you can find a fixture that will precisely match the technical and aesthetic requirements of corporate, government, municipal, educational and residential lighting design clients.

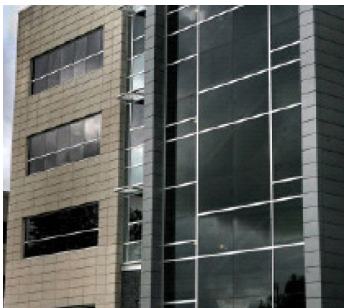


## Power Distribution & Commercial Lighting Division

### Services

- Engineering Assistance
- Comprehensive Project Management Services
- Specification Grade Lighting Fixtures
- Dimming and Lighting Control Systems
- Power and Distribution Equipment
- Low and Medium Voltage Switchgear
- Medium Voltage Transformers/Substations

**Our commercial lighting team is experienced enough to handle any size project, whether it is the latest LEED certified office building, school gymnasium or parking garage.**



### Clients Served

TF Green Airport - FM Global  
Ocean House - Citizens Bank  
Bank of America - Brown University  
Salve Regina University - University of Rhode Island  
Hasbro Children's Hospital - Brighton Street Bridge  
Taunton & Cranston High Schools - Twin River Casino  
Newport Grand - Route 95 Construction

We provided \$4 million worth of lighting and gear for FM Global's \$65 million, 336,600 square foot LEED Gold world headquarters in Johnston. The building features a multi-level parking garage, efficient HVAC systems, building lighting controls and low-water use fixtures. Additionally, 70 percent of wood came from sustainable forests, and 79 percent of all construction-related debris was recycled.

Munro provided the electrical power and distribution system for the world class Intermodal Transportation Facility linking the TF Green Airport with AMTRAK and MBTA commuter rail lines. When completed, the \$267 dollar transportation hub will be the closest link to a major airport terminal in the nation.

